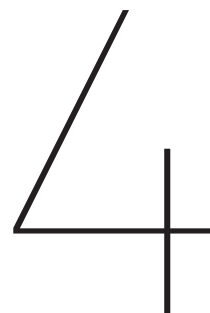


IMPLANT SYSTEM

MICRODENT EK

PRODUCTS GUIDE

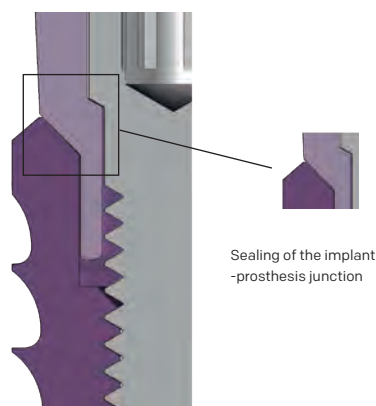
www.microdentsystem.com



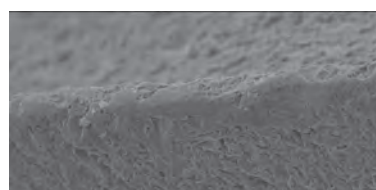
MICRODENT
IMPLANT SYSTEM

MICRODENT IMPLANT SYSTEM EK

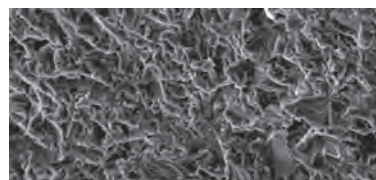
IMPLANTS FOR INTERNAL HEXAGONAL CONNECTION



The sealing between abutment and implant together with the retention screw helps us to avoid micromovement of the prosthesis.



Threaded edge at 500x magnification



Surface at 1,000x magnification

Connection

Hexagonal internal connection, common for all Ek system platforms, except for the wide and narrow platform:

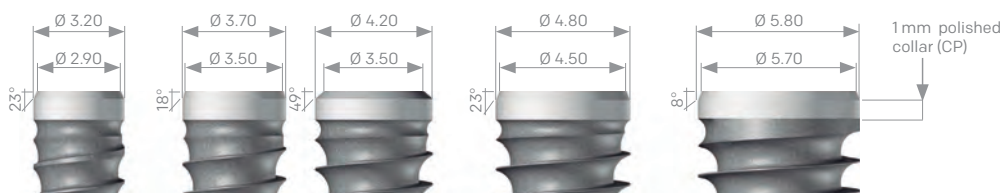
For implants with platform \varnothing 2.90 mm, an internal hexagon of 2.10 mm, measured between their faces, and a height of 2 mm.

For implants with platform \varnothing 3.50 mm and \varnothing 4.50 mm, an internal hexagon of 2.43 mm, measured between their faces, and a height of 2 mm.

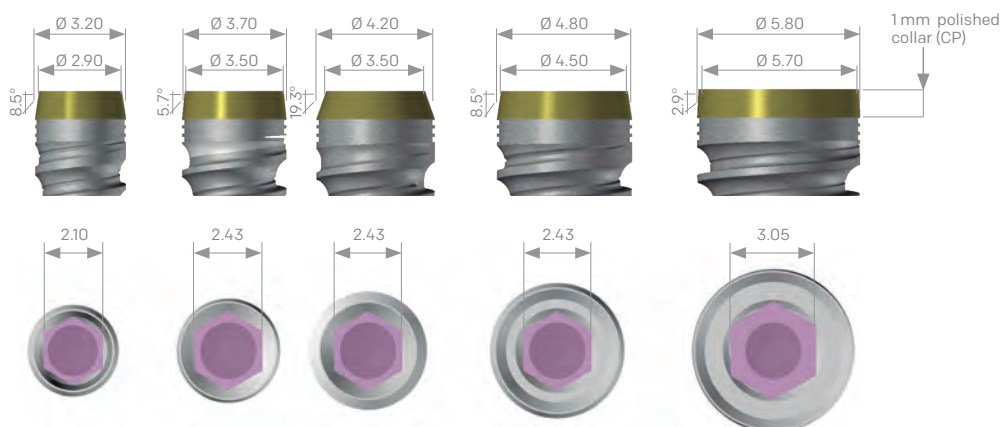
For implants with platform \varnothing 5.70 mm, an internal hexagon of 3.05 mm, measured between their faces, and a height of 2 mm.

Implants platform diameter 2.90 - 3.50 - 4.50 - 5.70

Classic model (EkC)

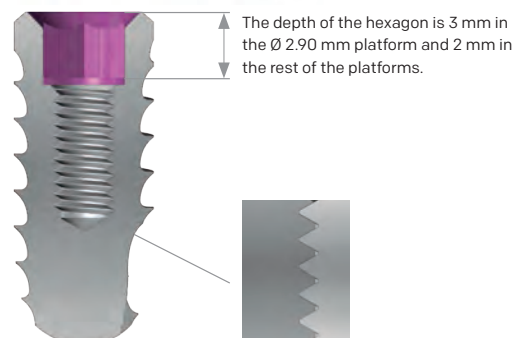


New morphology (E3kC)



Internal Screw M1.60 and M1.80

Internal thread M1.60 (2.90 platform) and M1.80 (other platforms) according to standard UNE-EN ISO 17708, machined with maximum precision, with a pitch of 0.35 mm. Only a 1.20 screwdriver is required to fix the prosthesis retention screw of the entire range of EK implants.



Section of the implant showing the type of thread and connection.

Surface

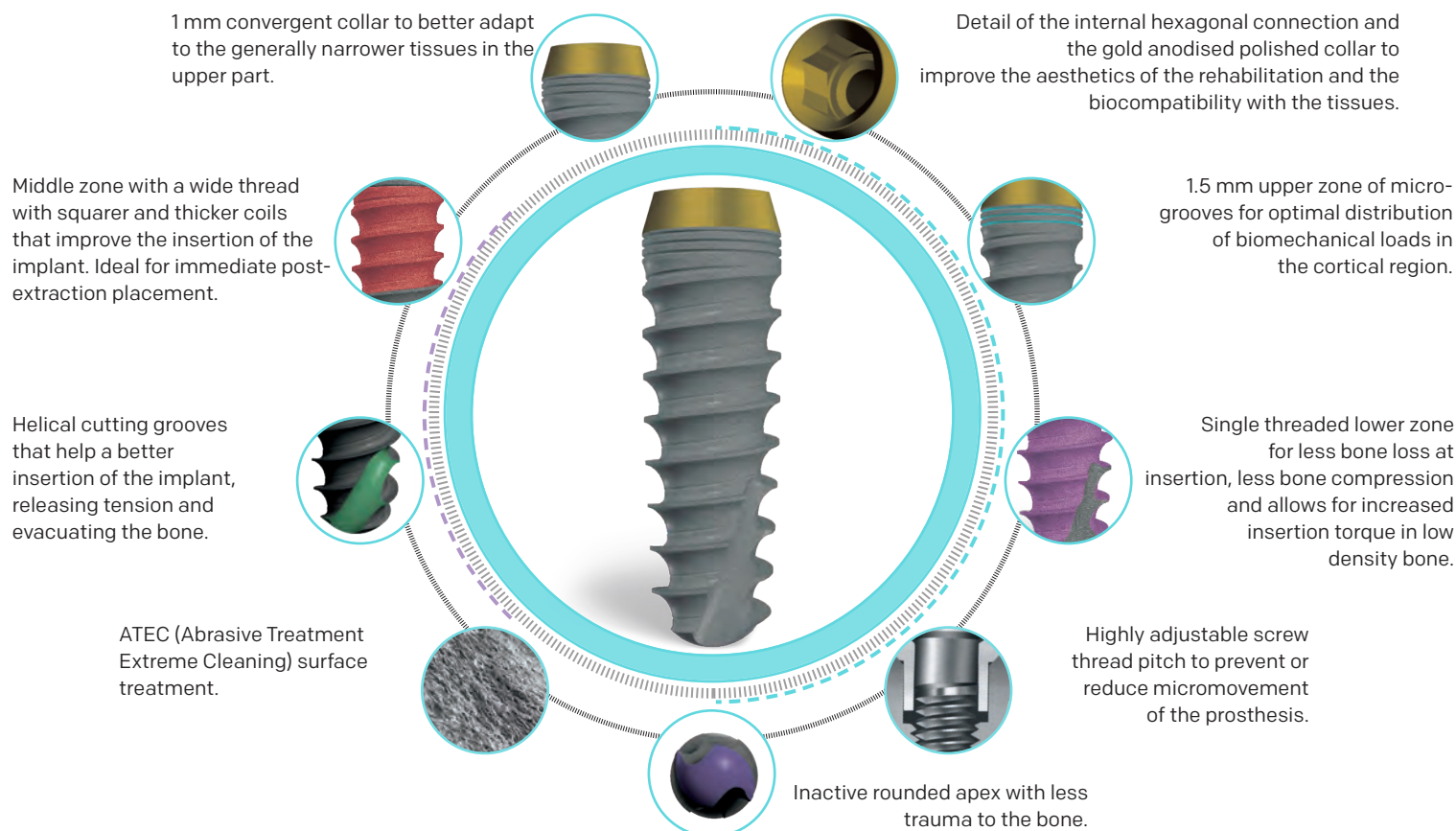
Microdent treats the surface of your dental implants by applying a physical attack with abrasive particles (sandblasting) at high pressure. This method, registered as Abrasive Treatment Extreme Cleaning (ATEC), causes an increase in the external surface of the implant and a homogeneous microroughness that favours osseointegration.

The cleaning process to which the implants are subjected guarantees and exceeds the standard established by the European Pharmacopoeia.

The external surface of all Ek family implants is sandblasted except for the 1 mm collar, which is polished.

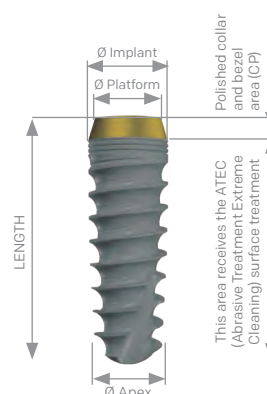
MICRODENT IMPLANTS E3kC

Implant system with hexagonal internal connection made of grade 4 titanium, which is inserted in a supracrestal position and can be used for immediate or deferred load techniques. Its novel design includes the data that, according to the scientific literature, justify the changes made to its external geometry. This mixed morphology, between conical and cylindrical, makes it a very versatile implant, while sharing the prosthetic attachments and instruments of the rest of the implants of this system.



Colour coding of the implant holders according to the platform. There are 4 platforms and 5 different implant diameters available (2 platforms and 3 diameters in the case of EKVC). This is indicated in the various reference tables.

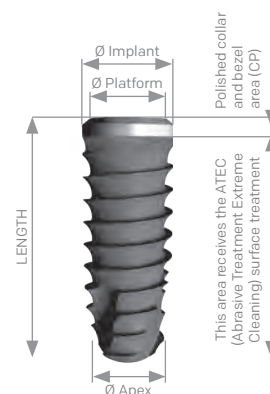
Platform diameter	Ø 2.90	Ø 3.50	Ø 3.50	Ø 4.50	Ø 5.70
External diameter	Ø 3.20	Ø 3.70	Ø 4.20	Ø 4.80	Ø 5.80
L 05	-	-	-	-	E3KC5805CP
L 06	-	-	E3KC4206CP	E3KC4806CP	E3KC5806CP
L 08	E3KC3208CP	E3KC3708CP	E3KC4208CP	E3KC4808CP	E3KC5808CP
L 10	E3KC3210CP	E3KC3710CP	E3KC4210CP	E3KC4810CP	E3KC5810CP
L 12	E3KC3212CP	E3KC3712CP	E3KC4212CP	E3KC4812CP	E3KC5812CP
L 14	E3KC3214CP	E3KC3714CP	E3KC4214CP	E3KC4814CP	E3KC5814CP
L 16	E3KC3216CP	E3KC3716CP	E3KC4216CP	E3KC4816CP	E3KC5816CP



MICRODENT IMPLANTS EkC

Implant system with hexagonal internal connection made of grade 4 titanium, which is inserted in a supracrestal position and can be used for immediate or deferred load techniques. A unitary control of all manufactured parts is performed to ensure the quality of the final product received by the clinician. The connection design features a conical inlet followed by an internal hexagon. Depending on the target market, it may be accompanied by an implant holder or a multifunction abutment.

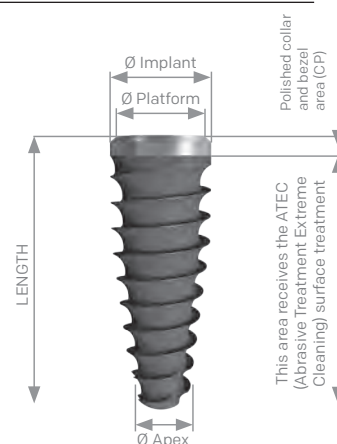
Platform diameter External diameter	Ø 2.90 Ø 3.20	Ø 3.50 Ø 3.70	Ø 3.50 Ø 4.20	Ø 4.50 Ø 4.80	Ø 5.70 Ø 5.80
L 05	-	-	-	-	EKC5805CP
L 06	-	-	EKC4206CP	EKC4806CP	EKC5806CP
L 08	EKC3208CP	EKC3708CP	EKC4208CP	EKC4808CP	EKC5808CP
L 10	EKC3210CP	EKC3710CP	EKC4210CP	EKC4810CP	EKC5810CP
L 12	EKC3212CP	EKC3712CP	EKC4212CP	EKC4812CP	EKC5812CP
L 14	EKC3214CP	EKC3714CP	EKC4214CP	EKC4814CP	EKC5814CP
L 16	EKC3216CP	EKC3716CP	EKC4216CP	EKC4816CP	EKC5816CP



MICRODENT IMPLANTS EkVC

As a complement to the system, Microdent has incorporated the EKVC implants in its range of hexagonal internal connection implants, adding the advantages of the expansive core (conical body) to perform minimally invasive surgery. This is because the implant can be inserted in narrow ridges with the use of just a cortical drill and subsequently planning of the Microdent bone expansion protocol, regardless of the quality and density of the bone. Indicated for cases of severe atrophy, thanks to its self-tapping capacity and excellent primary stability.

Platform diameter External diameter	Ø 3.50 Ø 3.70	Ø 3.50 Ø 4.20	Ø 4.50 Ø 4.80
L 06	-	EKVC4206CP	EKVC4806CP
L 08	EKVC3708CP	EKVC4208CP	EKVC4808CP
L 10	EKVC3710CP	EKVC4210CP	EKVC4810CP
L 12	EKVC3712CP	EKVC4212CP	EKVC4812CP
L 14	EKVC3714CP	EKVC4214CP	EKVC4814CP
L 16	EKVC3716CP	EKVC4216CP	EKVC4816CP
Apex diameter	Ø 2.50	Ø 2.60	Ø 3.10



The references corresponding to the implants presented with implant holder end without CP. Depending on the market, the implants will be supplied in implant-holder or multifunctional abutment (PMF) versions. The built-in multifunction abutment allows impressions to be taken on the abutment and can be used as a definitive abutment depending on the type of treatment. This is indicated in the various reference tables.



With diameters of 7 and 8 mm, and lengths of 5, 6, 8 and 10 mm, the EKpro hexagonal internal connection implants, together with the MKpro external connection series, complete the Microdent range of comprehensive solutions. Microdent's large diameter Pro series clinically solves situations encountered during implant fixation in posterior sectors. A safe option in the treatment of edentulous areas with low bone height. Consult the relevant catalogue.



HEALING ABUTMENTS

Straight and aesthetic healing abutments for healing and remodelling of the gums during the pre-prosthetic period, available in various heights.



TAKING IMPRESSIONS

Microdent has a series of elements for taking impressions that can be used for the open or closed tray technique. Replica/ Transfers/ Connecting screws.



PROSTHESIS

IMMEDIATE LOADING ABUTMENT

Special conical abutment used during the first surgical phase and with excellent retention for the cement-screwed prosthesis.



CONICAL ABUTMENT

Grade 5 tapered titanium abutments, with and without finish line for BOPT technique, rotary and anti-rotational. Available in various heights.



AESTHETIC ANGULATED ABUTMENT

Grade 5 titanium abutment to restore parallelism. Available in 15°, 20° and 25° angles.



MINI CAPITEL TRANSEPITHELIAL ABUTMENT

Rotating abutments for multiple screw-retained restorations (straight and angled at 17° or 30°) and anti-rotational abutments for single units. They allow multiple solutions and are available in various heights.



Angled abutment available in 17° and 30°.

DOME TI-BASE AND DYNAMIC DOME

Grade 5 titanium interface that is fixed to the implant platform allowing the fabrication of definitive cement-screwed prostheses. For CAD-CAM-assisted restorative dentistry. Available straight and with window.



ORIENTABLE SEMICALCINABLE ABUTMENT

Abutment with Chrome-Cobalt base and POM plastic chimney indicated to correct angulations of up to 25° in over-glued prostheses, thus directing the emergence of the screw.



Also available straight.

OVERDENTURES

OSSCILIA SYSTEM

System for correcting unevenness with respect to the vertical of 17°, consisting of a metal cap and three interchangeable Teflons with different levels of retention. Available in heights from 0 to 4 mm (0 and 1 mm for Ø 5.70 mm).



The Oscilia abutment has a DLC coating that improves its hardness and reduces the coefficient of friction.



MICRO-LOC SYSTEM

System with different retention levels, capable of compensating for unevenness. Available in heights of 0 to 3 mm (0 and 1 mm for Ø 5.70 mm).



The Micro-Loc abutment has a Titanium Nitride (TiN) coating to improve durability and reduce wear.



