

IMPLANT SYSTEM

MICRODENT GENIUS

PRODUCTS GUIDE

www.microdentsystem.com

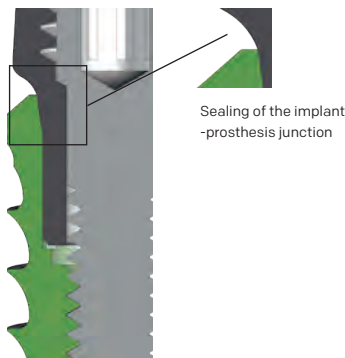
3



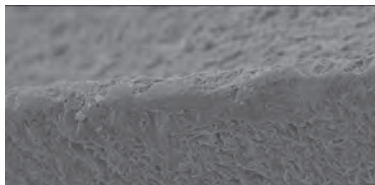
MICRODENT
IMPLANT SYSTEM

MICRODENT IMPLANT SYSTEM GENIUS

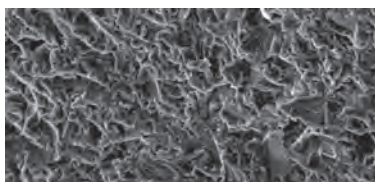
IMPLANTS FOR INTERNAL CONICAL CONNECTION



The 8° taper in the Microdent GENIUS, GENIUS V and G3NIUS connection produces a friction between the implant and prosthesis faces, favouring sealing and preventing permeability of the system. The conical seal minimises micromovement, which could cause loosening of the retaining screw of the prosthesis.



Threaded edge at 500x magnification



Surface at 1,000x magnification

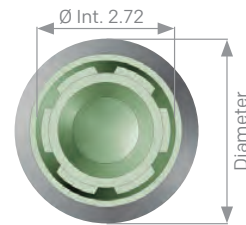
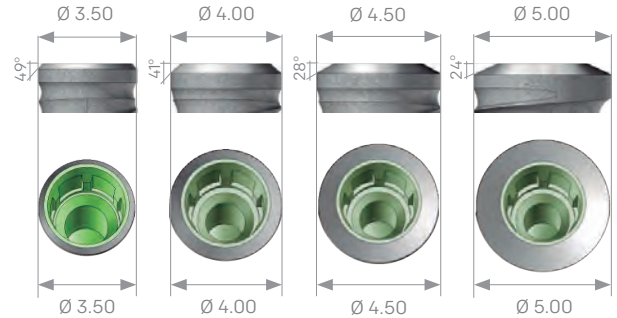
Connection

Indexed conical internal connection, common for all diameters of the Microdent GENIUS, GENIUS V and G3NIUS system, except for implants with Ø 3.00 diameter.

Implants diameter 3.00

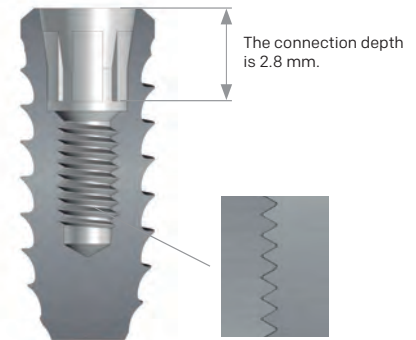


Implants diameter 3.50 - 4.00 - 4.50 - 5.00



Internal Screw M1.80

Internal according to standard UNE-EN ISO 17708, machined with maximum precision, with a pitch of 0.35 mm. Only a 1.20 screwdriver is required to fix the prosthesis retention screw of the entire range of Microdent GENIUS implants.



Section of the implant showing the type of thread and connection.

Surface

Microdent treats the surface of your dental implants by applying a physical attack with abrasive particles (sandblasting) at high pressure. This method, registered as Abrasive Treatment Extreme Cleaning (ATEC), causes an increase in the external surface of the implant and a homogeneous microroughness that favours osseointegration.

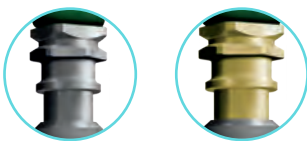
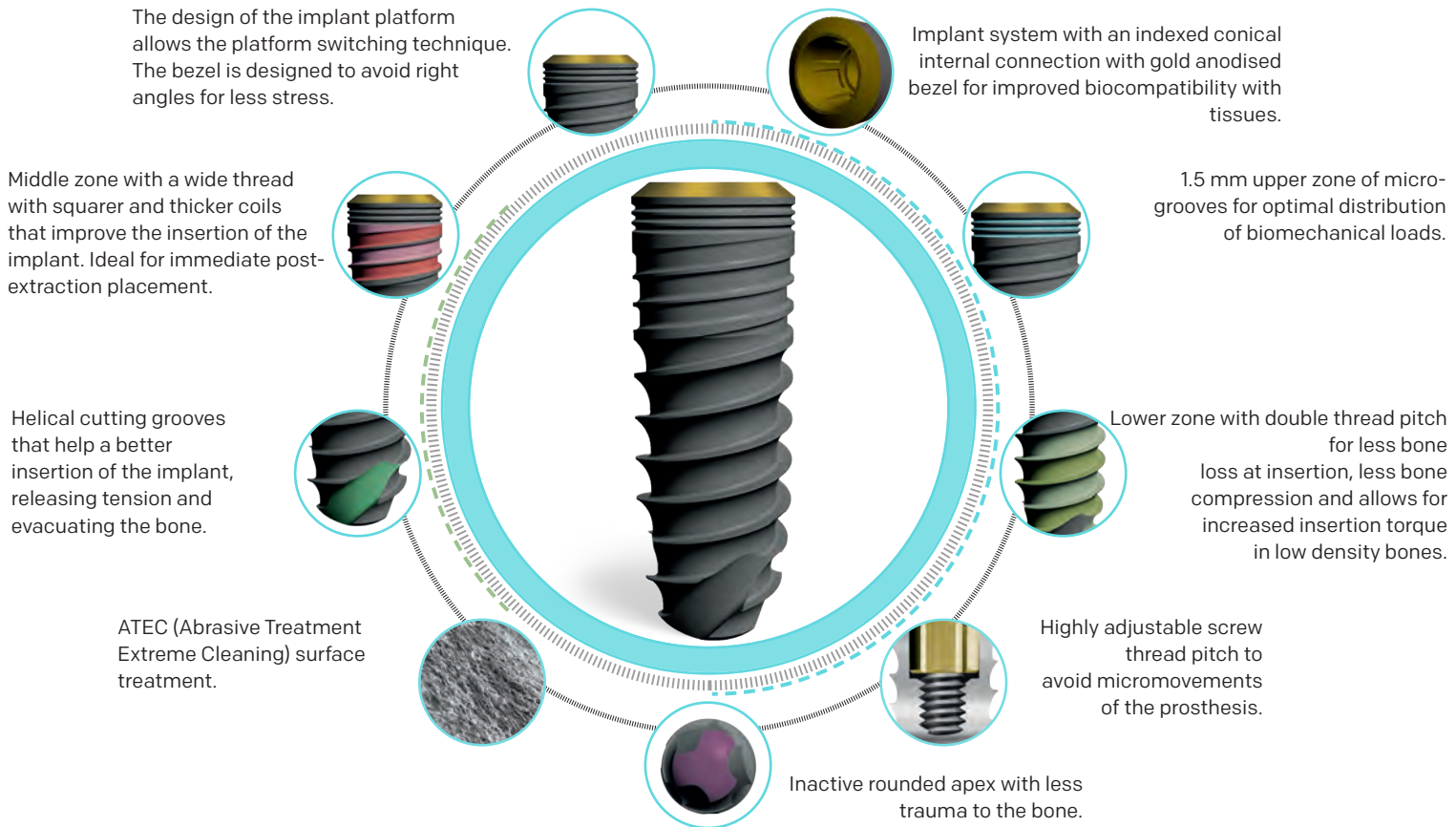
The cleaning process to which the implants are subjected guarantees and exceeds the standard established by the European Pharmacopoeia.

The external surface of all Genius family implants is sandblasted in its entire length, there is no version with a polished collar.

The new G3N morphology adds a gold anodised bezel for improved rehabilitation aesthetics and biocompatibility with tissues.

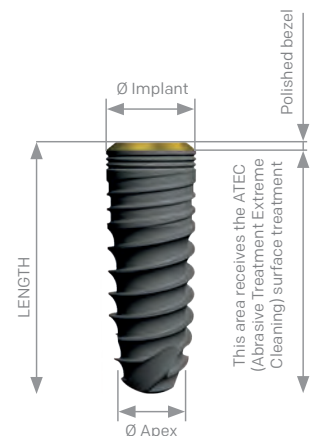
MICRODENT IMPLANTS G3NIUS

Implant system with an indexed conical internal connection (8° taper), made of grade 4 titanium, which is inserted in a subcrestal position and allows an excellent sealing of the implant-abutment junction. In addition to the characteristics of the classic model (Genius) from which it is based, its new design includes the data of the "ideal implant" according to the scientific literature, which justify the changes made to its external geometry. Only available in cylindrical version, it shares the prosthetic attachments (except the new 3.00 mm diameter) and the instrumentation of the rest of the implants of this system.



The different platforms share the same prosthetic connection, which allows the exchange of all prosthetic attachments (except the Ø 3.00 mm). Implant holders colour-coded according to platform, narrow (Ø 3.00 mm) and standard (compatible), gold anodised.

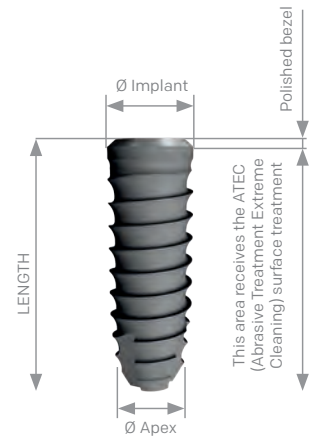
External diameter	Ø 3.00	Ø 3.50	Ø 4.00	Ø 4.50	Ø 5.00
Core diameter	Ø 3.00	Ø 3.50	Ø 4.00	Ø 4.50	Ø 5.00
L 08	G3N3008AT	G3N3508AT	G3N4008AT	G3N4508AT	G3N5008AT
L 10	G3N3010AT	G3N3510AT	G3N4010AT	G3N4510AT	G3N5010AT
L 12	G3N3012AT	G3N3512AT	G3N4012AT	G3N4512AT	G3N5012AT
L 14	G3N3014AT	G3N3514AT	G3N4014AT	G3N4514AT	G3N5014AT
L 16	G3N3016AT	G3N3516AT	G3N4016AT	G3N4516AT	G3N5016AT



MICRODENT IMPLANTS GENIUS

Implant system with an indexed conical internal connection, made of grade 4 titanium, which is inserted in a subcrestal position and allows an excellent sealing of the implant-abutment junction. A unitary control of all manufactured parts is performed to ensure the quality of the final product received by the clinician. The system allows the interchangeability of all attachments (except the new 3.00 mm diameter) to make the prosthesis. The design of the implant platform allows the platform switching technique.

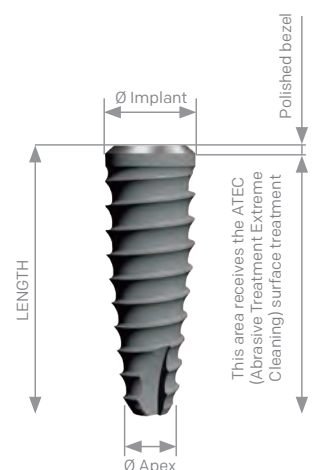
External diameter	Ø 3.00	Ø 3.50	Ø 4.00	Ø 4.50	Ø 5.00
Core diameter	Ø 3.00	Ø 3.50	Ø 4.00	Ø 4.50	Ø 5.00
L 08	GN3008AT	GN3508AT	GN4008AT	GN4508AT	GN5008AT
L 10	GN3010AT	GN3510AT	GN4010AT	GN4510AT	GN5010AT
L 12	GN3012AT	GN3512AT	GN4012AT	GN4512AT	GN5012AT
L 14	GN3014AT	GN3514AT	GN4014AT	GN4514AT	GN5014AT
L 16	GN3016AT	GN3516AT	GN4016AT	GN4516AT	GN5016AT



MICRODENT IMPLANTS GENIUS V

As a complement to the system, Microdent has incorporated the GENIUS V implants in its range of conical internal connection implants, adding the advantages of the expansive core (conical body) to perform minimally invasive surgery. This is because the implant can be inserted in narrow ridges with the use of just a cortical drill and subsequently planning of the Microdent bone expansion protocol, regardless of the quality and density of the bone. Indicated for cases of severe atrophy, thanks to its self-tapping capacity and excellent primary stability.

External diameter	Ø 3.50	Ø 4.00	Ø 4.50	Ø 5.00
Core diameter	Ø 3.50	Ø 4.00	Ø 4.80	Ø 5.00
L 08	GNV3508AT	GNV4008AT	GNV4508AT	GNV5008AT
L 10	GNV3510AT	GNV4010AT	GNV4510AT	GNV5010AT
L 12	GNV3512AT	GNV4012AT	GNV4512AT	GNV5012AT
L 14	GNV3514AT	GNV4014AT	GNV4514AT	GNV5014AT
L 16	GNV3516AT	GNV4016AT	GNV4516AT	GNV5016AT
Apex diameter	Ø 2.40	Ø 2.60	Ø 3.00	Ø 3.20



The references corresponding to the implants presented with implant holder end with PMF. Depending on the market, the implants will be supplied in implant-holder or multifunctional abutment (PMF) versions. The built-in multifunction abutment allows impressions to be taken on the abutment and can be used as a definitive abutment depending on the type of treatment. This is indicated in the various reference tables.

HEALING ABUTMENTS

Straight and aesthetic healing abutments for healing and remodelling of the gums during the pre-prosthetic period, available in various heights.



TAKING IMPRESSIONS

Microdent has a series of elements for taking impressions that can be used for the open or closed tray technique. Replica/ Transfers/ Connecting screws.



PROSTHESIS

IMMEDIATE LOADING ABUTMENT

Special conical abutment used during the first surgical phase and with excellent retention for the cement-screwed prosthesis.



MINI CAPITEL TRANSEPIHELIAL ABUTMENT

Rotating abutments for multiple screw-retained restorations (straight and angled at 17° or 30°) and anti-rotational abutments for single units. They allow multiple solutions and are available in various heights.



Angled abutment available in 17° and 30°.

CONICAL ABUTMENT

Grade 5 tapered titanium abutments, with and without finish line for BOPT technique, rotary and anti-rotational. Available in various heights.



DOME TI-BASE AND DYNAMIC DOME

Grade 5 titanium interface that is fixed to the implant platform allowing the fabrication of definitive cement-screwed prostheses. For CAD-CAM-assisted restorative dentistry.



AESTHETIC ANGULATED ABUTMENT

Grade 5 titanium abutment, with and without finish line, to restore parallelism. Available in 15°, 20° and 25° angles.



ORIENTABLE SEMICALCINABLE ABUTMENT

Abutment with Chrome-Cobalt base and POM plastic chimney indicated to correct angulations of up to 25° in over-glued prostheses, thus directing the emergence of the screw.



Also available straight.

OVERDENTURES

OSSCILIA SYSTEM

System for correcting unevenness with respect to the vertical of 17°, consisting of a metal cap and three interchangeable Teflons with different levels of retention. Available in heights from 0 to 6 mm.



The Oscilia abutment has a DLC coating which improves its hardness and reduces the coefficient of friction.

MICRO-LOC SYSTEM

System with different retention levels, capable of compensating for unevenness. Available in heights of 0 to 6 mm (from 1 to 6 mm for Ø 3.00 mm).



The Micro-Loc abutment has a Titanium Nitride (TiN) coating to improve durability and reduce wear.

