

IMPLANT SYSTEM

---

# MICRODENT UNIVERSAL

---

PRODUCTS GUIDE

---

[www.microdentsystem.com](http://www.microdentsystem.com)

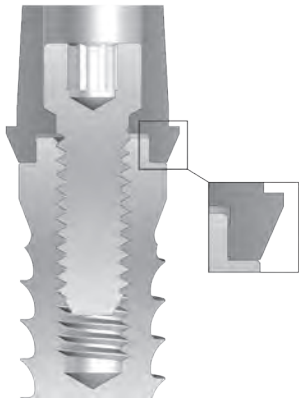
2



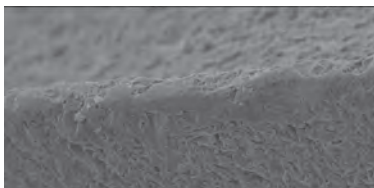
MICRODENT  
IMPLANT SYSTEM

# MICRODENT IMPLANT SYSTEM UNIVERSAL

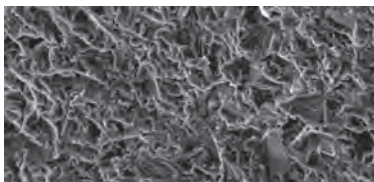
## IMPLANTS FOR EXTERNAL HEXAGO- NAL CONNECTION CONNECTION



Branemark type universal hex connection with 0.7 mm height providing an excellent implant-prosthesis fit with six faces to position the anti-rotational attachments.



**Threaded edge at 500x magnification**



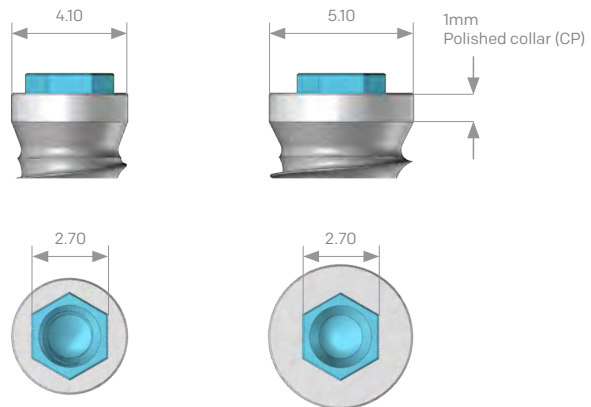
**Surface at 1,000x magnification**

### Connection

Universal hexagonal external connection, common for all Microdent UNIVERSAL and UNIVERSAL V system platforms.

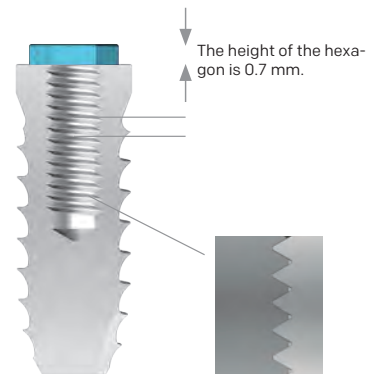
The  $\varnothing$  4.10 and 5.10 mm platforms have an external hexagon of 2.70 mm, measured between their faces, and a height of 0.7 mm. Their internal screw is M2.00.

### Implants platform diameter 4.10 - 5.10



### Internal Screw M2.00

Internal according to standard UNE-EN ISO 17708, machined with maximum precision, with a pitch of 0.40mm. Only a 1.20 screwdriver is required to fix the prosthesis retention screw of the entire range of Microdent UNIVERSAL implants.



### Surface

Microdent treats the surface of your dental implants by applying a physical attack with abrasive particles (sandblasting) at high pressure. This method, registered as Abrasive Treatment Extreme Cleaning (ATEC), causes an increase in the external surface of the implant and a homogeneous microroughness that favours osseointegration.

The cleaning process to which the implants are subjected guarantees and exceeds the standard set out by the European Pharmacopoeia.

The external surface of all Universal family implants is sandblasted except for the 1 mm collar (0.5 mm for Universal V) and the 0.7 mm external hexagon, which are polished.



Also available is the Microdent System implant system whose hexagon on which the prosthesis is seated is larger than that of the Universal system. 1 mm in height and 3 mm in width for platforms  $\varnothing$  4.20 and  $\varnothing$  5.10, which offers better prosthetic stability and allows a higher torque. Consult the relevant catalogue.



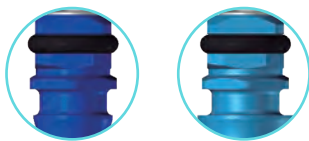
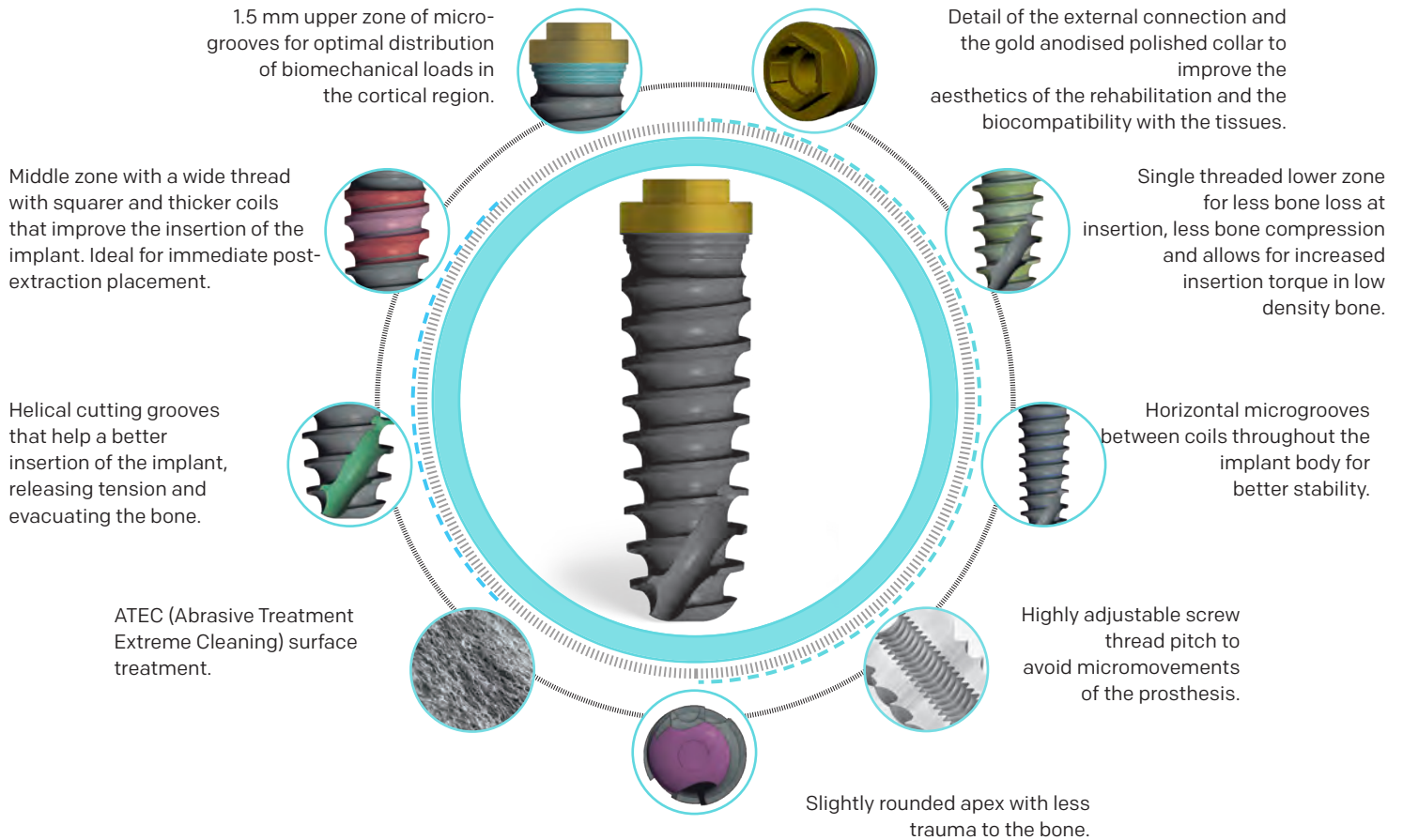
Universal  $\varnothing$  4.10



System  $\varnothing$  4.20

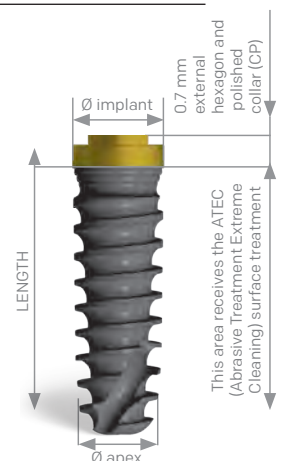
# MICRODENT IMPLANTS S3U

Implant system with hexagonal external connection made of grade 4 titanium, which is inserted in a supracrestal position and can be used for immediate or deferred load techniques. Its novel design includes the data that, according to the scientific literature, justify the changes made to its external geometry. This mixed morphology, between conical and cylindrical, makes it a very versatile implant, while sharing the prosthetic attachments and instruments of the rest of the implants of this system.



Colour coding of the implant holders according to the platform. There are 2 platforms and 3 different implant diameters available (2 platforms and 3 diameters in the case of SUV). This is indicated in the various reference tables.

Platform diameter	Ø 4.10	Ø 4.10	Ø 4.10	Ø 4.10	Ø 5.10	Ø 5.10
Core diameter	Ø 3.30	Ø 3.50	Ø 3.75	Ø 4.00	Ø 4.20	Ø 5.00
L06	-	-	S3U37506CP	S3U4006CP	S3U504206CP	S3U5006CP
L 08	S3U3308CP	S3U3508CP	S3U37508CP	S3U4008CP	S3U504208CP	S3U5008CP
L 10	S3U3310CP	S3U3510CP	S3U37510CP	S3U4010CP	S3U504210CP	S3U5010CP
L 12	S3U3312CP	S3U3512CP	S3U37512CP	S3U4012CP	S3U504212CP	S3U5012CP
L 14	S3U3314CP	S3U3514CP	S3U37514CP	S3U4014CP	S3U504214CP	S3U5014CP
L 16	S3U3316CP	S3U3516CP	S3U37516CP	S3U4016CP	S3U504216CP	S3U5016CP

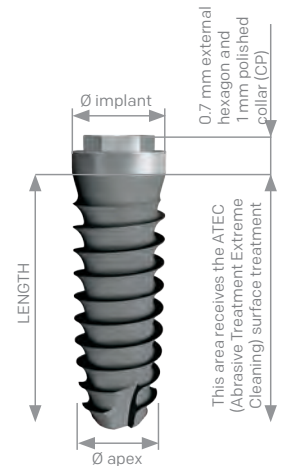


The length of the implant is determined from the apex to the 1 mm polished collar. It does not include the height of the hexagon, which is 0.7 mm. For surgical protocols it should be taken into account that the drilling depth will be the same as the implant length (L).

# MICRODENT IMPLANTS SU

Implant system with universal hexagonal external connection made of grade 4 titanium, which is inserted in a supracrestal position and can be used for immediate or deferred load techniques. A unitary control of all manufactured parts is performed to ensure the quality of the final product received by the clinician. The design of the connection stands out due to its universality, providing great prosthetic versatility.

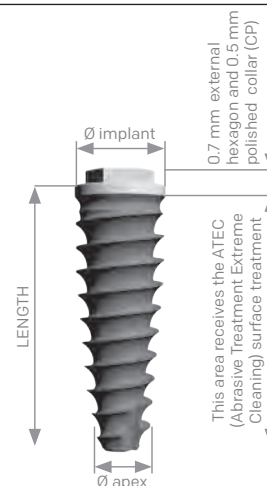
Platform diameter	Ø 4.10	Ø 4.10	Ø 4.10	Ø 4.10	Ø 5.10	Ø 5.10
Core diameter	Ø 3.30	Ø 3.50	Ø 3.75	Ø 4.00	Ø 4.20	Ø 5.00
L06	-	-	SU37506CP	SU4006CP	SU504206CP	SU5006CP
L 08	SU3308CP	SU3508CP	SU37508CP	SU4008CP	SU504208CP	SU5008CP
L 10	SU3310CP	SU3510CP	SU37510CP	SU4010CP	SU504210CP	SU5010CP
L 12	SU3312CP	SU3512CP	SU37512CP	SU4012CP	SU504212CP	SU5012CP
L 14	SU3314CP	SU3514CP	SU37514CP	SU4014CP	SU504214CP	SU5014CP
L 16	SU3316CP	SU3516CP	SU37516CP	SU4016CP	SU504216CP	SU5016CP



# MICRODENT IMPLANTS SUV

As a complement to the system, Microdent has incorporated the UNIVERSAL V implants in its range of universal hexagonal external connection implants, adding the advantages of the expansive core (conical body) to perform minimally invasive surgery. This is because the implant can be inserted in narrow ridges with the use of just a cortical drill and subsequently planning of the Microdent bone expansion protocol, regardless of the quality and density of the bone. Indicated for cases of severe atrophy, thanks to its self-tapping capacity and excellent primary stability.

Platform diameter	Ø 4.10	Ø 4.10	Ø 5.10
Core diameter	Ø 3.75	Ø 4.00	Ø 5.00
L 08	SUV37508CP	SUV4008CP	SUV5008CP
L 10	SUV37510CP	SUV4010CP	SUV5010CP
L 12	SUV37512CP	SUV4012CP	SUV5012CP
L 14	SUV37514CP	SUV4014CP	SUV5014CP
L 16	SUV37516CP	SUV4016CP	SUV5016CP
<b>Apex diameter</b>	Ø 2.50	Ø 2.70	Ø 3.20



The length of the tapered implant is determined from the apex of the implant to the end of the platform, 0.5 mm polished collar included. It does not include the height of the hexagon, which is + 0.7 mm. For surgical protocols it should be taken into account that the drilling depth will be the same as the implant length (L).

## HEALING ABUTMENTS

Straight temporary healing abutments are used for healing and shaping of the gingiva during the pre-prosthetic period. Available heights from 2 to 5.5 mm. Divergent temporary healing abutments are used to form a wider, anatomical mucosal space. Available heights of 4 and 6 mm.



## TAKING IMPRESSIONS

Microdent has a series of elements for taking impressions that can be used for the open or closed tray technique. Replica/Transfers/Connecting screws.



## PROSTHESIS

### IMMEDIATE LOADING ABUTMENT

Special conical abutment used during the first surgical phase and with excellent retention for the cement-screwed prosthesis.



### CONICAL ABUTMENT

Grade 5 tapered titanium abutments, with and without finish line for BOPT technique, rotary and anti-rotational. Heights up to 4 mm.



### AESTHETIC ANGULATED ABUTMENT

Angled abutment with inverted finish line which, being located on the opposite side, allows vestibular concealment of the metal. Available in 15°, 20° and 25° angles.



Angled abutment also available with and without finish line

### MINI CAPITEL TRANSEPITHELIAL ABUTMENT

Rotating abutments for multiple screw-retained restorations (straight and angled at 17° or 30°) and anti-rotational abutments for single units. They allow multiple solutions and are available in various heights.



Angled abutment available in 17° and 30°.

### DOME TI-BASE AND DYNAMIC DOME

Grade 5 titanium interface that is fixed to the implant platform allowing the fabrication of definitive cement-screwed prostheses. For CAD-CAM-assisted restorative dentistry.



### ORIENTABLE SEMICALCINABLE ABUTMENT

Abutment with Chrome-Cobalt base and POM plastic chimney indicated to correct angulations of up to 25° in over-glued prostheses, thus directing the emergence of the screw.



Also available straight.

## OVERDENTURES

### OSSCILIA SYSTEM

System for correcting unevenness with respect to the vertical of 17°, consisting of a metal cap and three interchangeable Teflons with different levels of retention. Available in heights from 0 to 4 mm.



The Oscilia abutment has a DLC coating that improves its hardness and reduces the coefficient of friction.



### MICRO-LOC SYSTEM

System with different retention levels, capable of compensating for unevenness. Available in heights of 0 to 3 mm.



The abutment has a Titanium Nitride (TiN) coating to improve durability and reduce wear.



