

IMPLANT SYSTEM

MICRODENT WIDE IMPLANTS

PRODUCTS GUIDE

www.microdentsystem.com

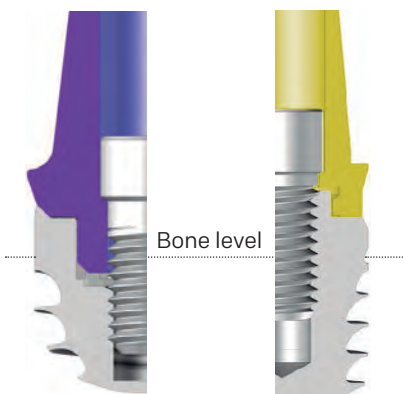
5



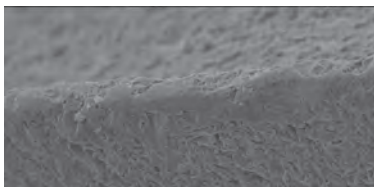
MICRODENT
IMPLANT SYSTEM

IMPLANT SYSTEM WIDE IMPLANTS

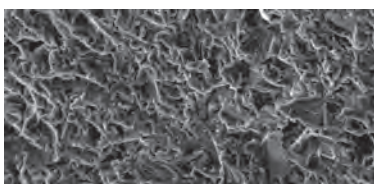
WIDE CONNECTION IMPLANTS INTERNAL AND EXTERNAL



The excellent fitting between abutment and implant together with the retention screw helps us to avoid micromovement of the prosthesis.



Threaded edge at 500x magnification



Surface at 1,000x magnification

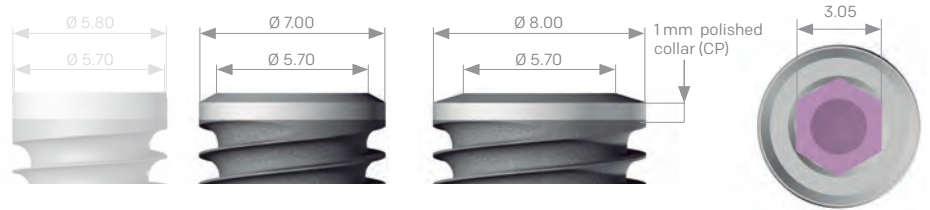
EKpro - Internal connection

The EKpro internal connection system has a single platform and two implant diameters.

The hexagonal connection is the same as that of the EK implants with platform \varnothing 5.70 mm. All have an internal hexagon of 3.05 mm, measured between their faces, and a depth of 2 mm.

They have an internal thread M1.80 according to standard UNE-EN ISO 17708, machined with maximum precision, with a pitch of 0.35 mm.

Implants platform diameter 5.80 - 7.00 - 8.00



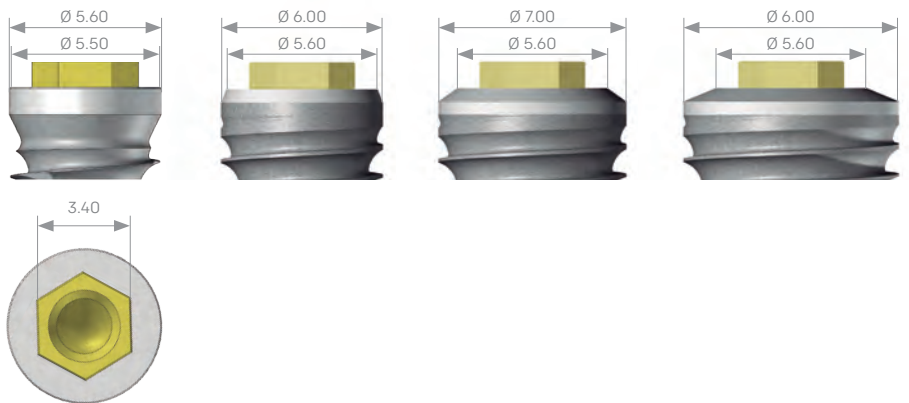
MKpro - External connection

The MKpro external connection system has two platforms and four implant diameters.

All have an external hexagon of 3.40 mm, measured between their faces, and a height of 1 mm.

They have an internal thread M2.50 according to standard UNE-EN ISO 17708, machined with maximum precision, with a pitch of 0.35 mm.

Implants platform diameter 5.60 - 6.00 - 7.00 - 8.00



Surface

Microdent treats the surface of your dental implants by applying a physical attack with abrasive particles (sandblasting) at high pressure. This method, registered as Abrasive Treatment Extreme Cleaning (ATEC), causes an increase in the external surface of the implant and a homogeneous microroughness that favours osseointegration.

The cleaning process to which the implants are subjected guarantees and exceeds the standard established by the European Pharmacopoeia.

The external surface of all EKpro and MKpro family implants is sandblasted except for the 1 mm collar, which is polished.

MICRODENT IMPLANTS EK_{pro}

Implant system with large diameter and hexagonal internal connection made of grade 4 titanium, which is inserted in a supracrestal position and can be used for immediate or deferred load techniques. A unitary control of all manufactured parts is performed to ensure the quality of the final product received by the clinician.

The connection design features a conical inlet followed by an internal hexagon.

Depending on the target market, it may be accompanied by an implant holder or a multifunction abutment.

Microdent's large-diameter Pro series makes it possible to take advantage of the patient's residual bone while avoiding sensitive anatomical structures without the need for additional surgeries required with a conventional implant restoration.

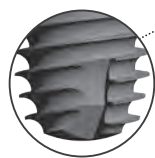
The design of the platform with bezel, has been developed to avoid right angles.



External thread with double entry that allows a reduction in the number of turns necessary for the insertion of the implant.



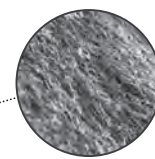
Cutting groove apex for excellent primary retention. They help to compact the bone.



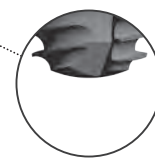
Indicated in situations that arise during the fixation of implants in posterior sectors.



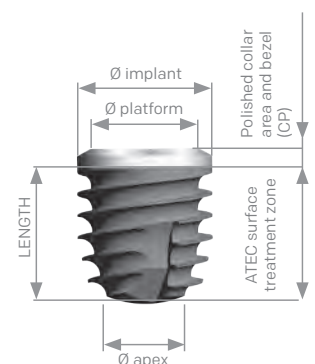
ATEC (Abrasive Treatment Extreme Cleaning) surface treatment.



Inactive rounded apex with less trauma to the bone. Facilitates the possibility of redirecting the implant.



Platform diameter	Ø 5.70	Ø 5.70	Ø 5.70
External diameter	Ø 5.80	Ø 7.00	Ø 8.00
L 05	EKC5805CP	EK7005CP	EK8005CP
L 06	EKC5806CP	EK7006CP	EK8006CP
L 08	EKC5808CP	EK7008CP	EK8008CP
L 10	EKC5810CP	EK7010CP	EK8010CP
L 12	EKC5812CP	-	-



The shaded platform 5.7 shown in this guide is a complementary smaller diameter alternative belonging to the EK system. Consult the relevant catalogue.



The references corresponding to the implants presented with implant holder end without CP. Depending on the market, the implants will be supplied in implant-holder or PMF versions.

MICRODENT IMPLANTS MKpro

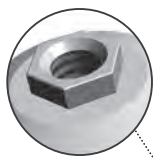
Implant system with large diameter and hexagonal external connection made of grade 4 titanium, which is inserted in a supracrestal position and can be used for immediate or deferred load techniques. A unitary control of all manufactured parts is performed to ensure the quality of the final product received by the clinician.

The different core diameters of the MKpro implants share the same prosthesis except for the prosthetic screw which is different for the 4 mm length.

Depending on the target market, it may be accompanied by an implant holder or a multifunction abutment.

The Pro series offers a contact surface equal or even superior to that of a standard implant and makes it an ideal solution in post-extraction cases at the molar level.

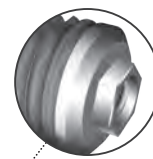
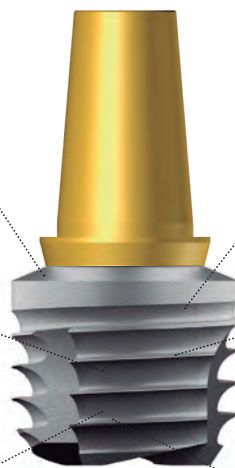
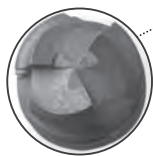
Robust external connection of 3.40 mm e/c and 1 mm height, together with the resistance of the M2.5 mm retention screw thickness, allows any type of stress on the prosthesis to be absorbed.



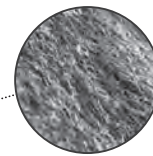
Homogeneous external thread in all its extension, single pitch and inverted buttress type.



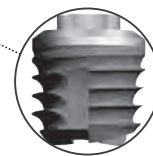
Cutting groove apex for excellent primary retention. They help to compact the bone.



Indicated for post-extraction surgeries of the posterior sector to seal the alveolus after tooth extraction.

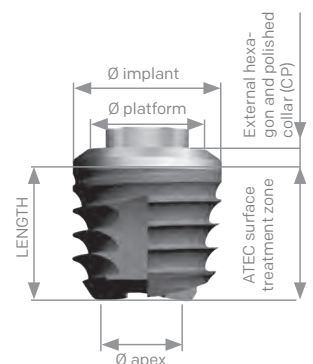


ATEC (Abrasive Treatment Extreme Cleaning) surface treatment.



Large diameter implant with a wide and deep thread that allows an increase in the osseointegration surface.

Platform diameter	Ø 5.50	Ø 5.60	Ø 5.60	Ø 5.60
External diameter	Ø 5.60	Ø 6.00	Ø 7.00	Ø 8.00
L 04	-	MK6004	MK7004	MK8004
L 06	MK5506	MK6006	MK7006	MK8006
L 08	MK5508	MK6008	MK7008	MK8008
L 10	MK5510	MK6010	MK7010	MK8010
L 12	MK5512	-	-	-



HEALING ABUTMENTS

Straight and aesthetic healing abutments for healing and remodelling of the gums during the pre-prosthetic period, available in various heights.



TAKING IMPRESSIONS

Microdent has a series of elements for taking impressions that can be used for the open or closed tray technique. Replica/ Transfers/ Connecting screws.



PROSTHESIS

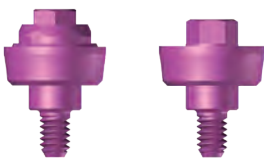
IMMEDIATE LOADING ABUTMENT

Special conical abutment used during the first surgical phase and with excellent retention for the cement-screwed prosthesis.



MINI CAPITEL TRANSEPITHELIAL ABUTMENT (EKpro only)

Rotating abutments for multiple screw-retained restorations (straight only) and anti-rotational abutments for single units. They allow multiple solutions and are available in various heights.



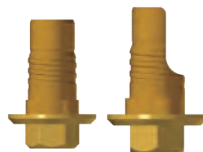
CONICAL ABUTMENT

Grade 5 tapered titanium abutments, with and without finish line for BOPT technique, rotary and anti-rotational. Available in various heights.



DOME TI-BASE AND DYNAMIC DOME

Grade 5 titanium interface that is fixed to the implant platform allowing the fabrication of definitive cement-screwed prostheses. For CAD-CAM-assisted restorative dentistry. Available straight and with window.



AESTHETIC ANGULATED ABUTMENT (EKpro only)

Grade 5 titanium abutment to restore parallelism. Available in 15°, 20° and 25° angles.



ORIENTABLE SEMICALCINABLE ABUTMENT

Abutment with Chrome-Cobalt base and POM plastic chimney indicated to correct angulations of up to 25° in over-glued prostheses, thus directing the emergence of the screw.



Also available straight.

OVERDENTURES

OSSCILIA SYSTEM

System for correcting unevenness with respect to the vertical of 17°, consisting of a metal cap and three interchangeable Teflons with different levels of retention. Available in heights 0 and 1 for EKpro and height 0 for MKpro.



The Oscilia abutment has a DLC coating that improves its hardness and reduces the coefficient of friction.



MICRO-LOC SYSTEM

System with different retention levels, capable of compensating for unevenness. Available in heights 0 and 1 for EKpro and height 0 for MKpro.



The Micro-Loc abutment has a Titanium Nitride (TiN) coating to improve durability and reduce wear.



